

Parking guide

Unfortunately there is no on-site parking possible. For that reason, we encourage you to make use of public transportation if possible.



Parking spaces in the area around the venue – as it is a residential area – are limited in number and during the summer are highly desirable due to swimmers and guests of the lake.

Nevertheless, it is possible to park in the streets around the venue. But only in the marked areas marked with:

1. separated stripes
2. white lines
3. blue “P” signs

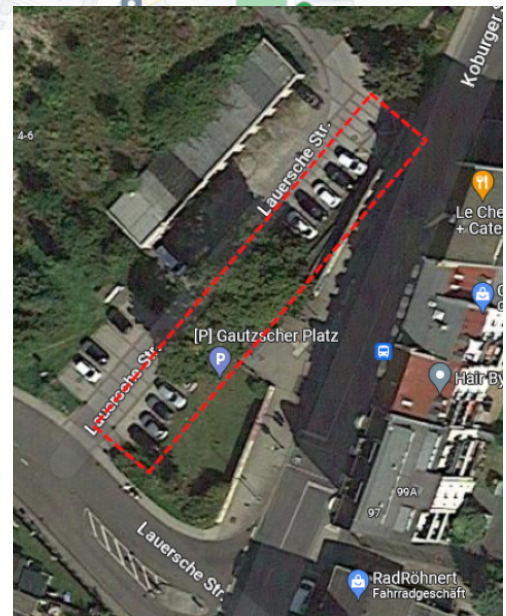


We expect that the local authorities will check thoroughly if cars are parked correctly during the summer. So, have a second look before you park to avoid expensive parking tickets.

You can find some smaller, free parking areas near the venue:



- Gautzscher Platz: 20 spaces on the town side (sea side is just 2h parking from 9 a.m. to 6 p.m.)



- Koburger Straße/Rathaus Straße: 20 spaces on the sea side (town side is just 2h parking from 9 a.m. to 8 p.m.)
- Borngasse/Pfarrgasse: 7 spaces

and one huge free parking area 1.7 km northwest from the venue (see next page)

- Parking Cospudener See, Ziegeleiweg, 04416 Leipzig. It will be a 20 Minutes walk along a charming landscape park or 2 stops with the bus 65 or 79

